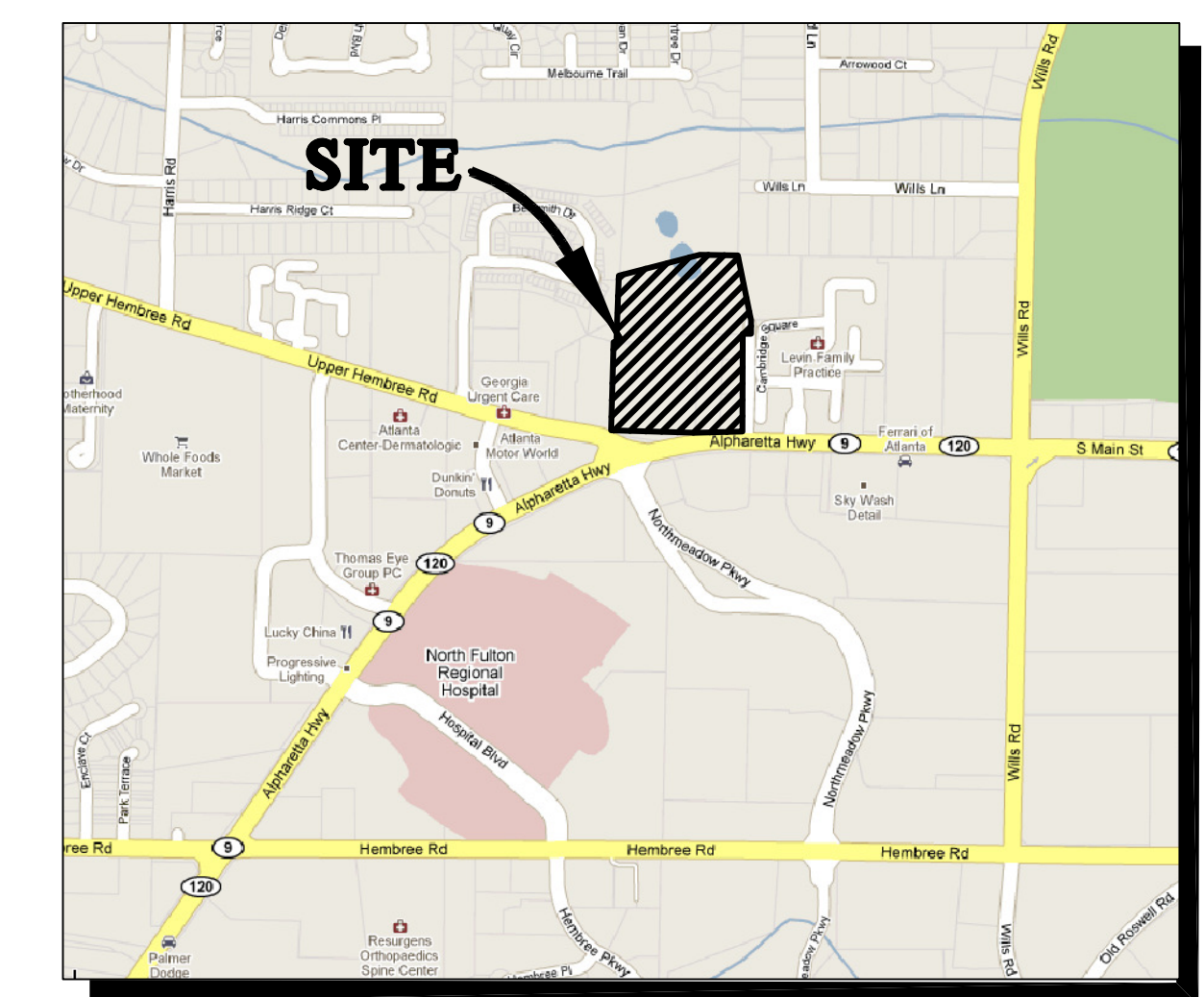
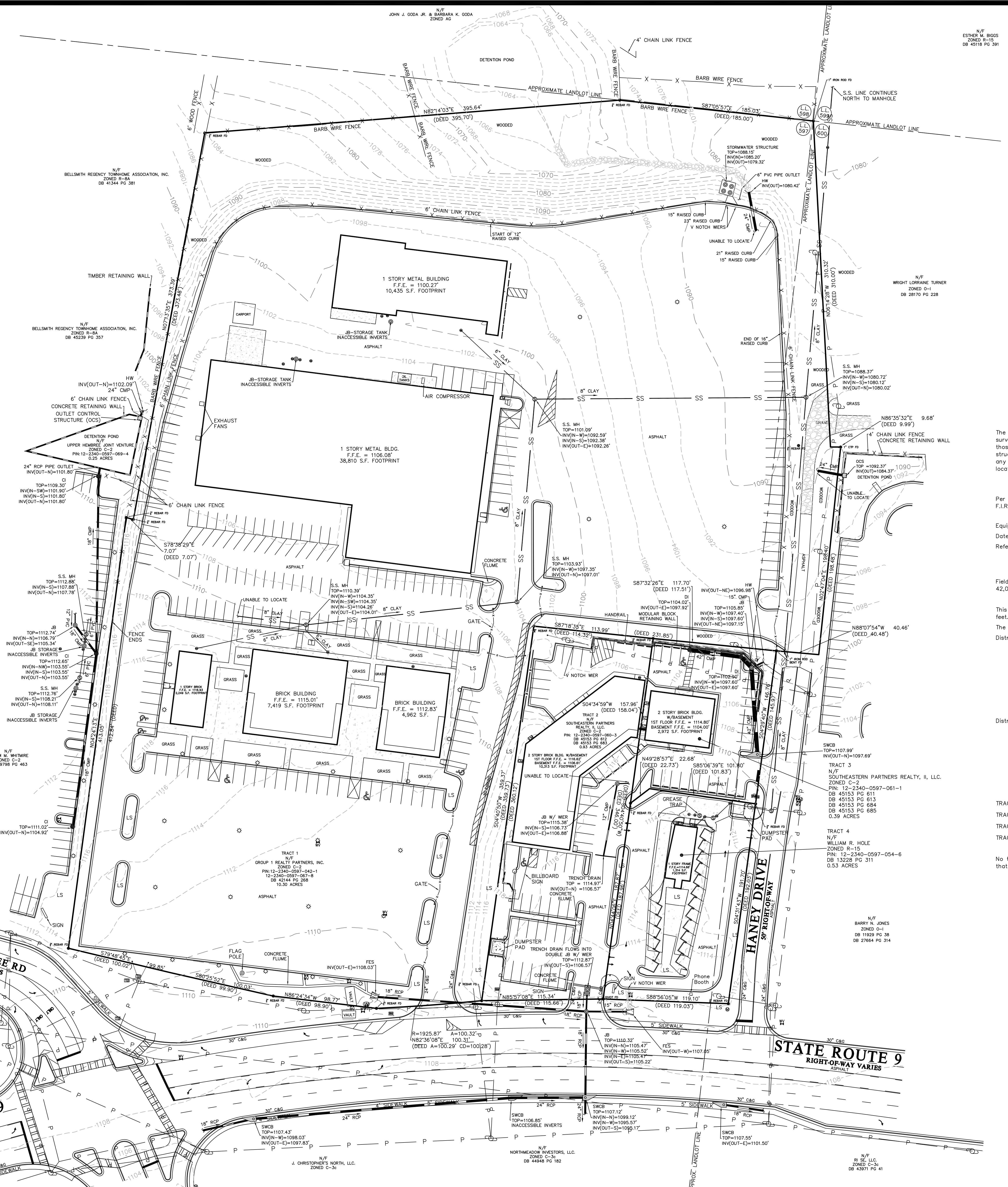


- LEGEND**
- Utility Pole
 - ⊙ Light Pole
 - ⊕ Fire Hydrant
 - ⊗ Sanitary Sewer Manhole
 - ⊗ Irrigation Control Valve
 - ⊗ Water Meter
 - ⊗ Water Valve
 - ⊗ Headwall
 - ⊗ Wood Fence
 - ⊗ Fire Department Connection
 - ⊗ Concrete
 - ⊗ Air Conditioner
 - ⊗ Curb and Gutter
 - ⊗ Curb Inlet
 - ⊗ Corrugated Metal Pipe
 - ⊗ Clean Out
 - ⊗ Continuation of Line (not shown)
 - ⊗ Crimp Top Pipe
 - ⊗ Deed Book
 - ⊗ Drop Inlet
 - ⊗ Ductile Iron Pipe
 - ⊗ Double Wing Catch Basin
 - ⊗ Electrical Box / Equipment
 - ⊗ Electrical Meter
 - ⊗ Flag Pole
 - ⊗ Flared End Section
 - ⊗ Found
 - ⊗ Gas Meter
 - ⊗ Handicap
 - ⊗ Headwall
 - ⊗ Irrigation Control Valve
 - ⊗ Junction Box
 - ⊗ Landscape Area
 - ⊗ Monitoring Well
 - ⊗ Monument
 - ⊗ Now or Formerly
 - ⊗ Outlet Control Structure
 - ⊗ Open Top Pipe
 - ⊗ Page
 - ⊗ Polyvinyl Chloride
 - ⊗ Reinforced Concrete Pipe
 - ⊗ Right-of-Way
 - ⊗ Sature Feet
 - ⊗ Single Wing Catch Basin
 - ⊗ Traffic Signal Box
 - ⊗ Valve Marker
 - ⊗ Yard Inlet



VICINITY MAP
SCALE: NONE

The information on this plat showing underground structures and utilities was obtained from a limited field survey. There is no certainty of the accuracy of this information and it shall be considered in that respect by those using this drawing. The exact location, size, character and arrangement of underground utilities and structures were not determined. Additional underground utilities may be encountered. The exact location of any underground utilities should be verified before digging. This plat should not be relied upon for the exact location or presence of underground utilities.

Per graphical platting, no portion of the subject property is located in a special flood hazard area as per the F.I.R.M. Community Panel Number 13121C0054 E dated June 22, 1998.

Equipment Used: TOPCON GTS-233W
Date of field work: June 2-10, 2010
Reference Deeds: Deed Book 42144, Page 268
Deed Book 45153, Page 612
Deed Book 13228, Page 311
Deed Book 45153, Page 684

Field Closure: The field data upon which this map or plat is based has a closure precision of one foot in 42,000 feet, and an angular error of 03" per angle point and was adjusted using the Compass Rule.

This map or plat has been calculated for closure and is found to be accurate within one foot in 356,475 feet.

The subject property is zoned C-2 and R-15 as per the City of Alpharetta records.

District Regulations for C-2 Zoning are:

- Front yard: Conditional (based upon prevailing development patterns)
- Side yard: Conditional (based upon prevailing development patterns)
- Rear yard: 10'
- Min. Lot Area: None
- Min. Lot Width: None
- Max. Coverage By Principal Buildings: 70%
- Max. Building Height: 40'

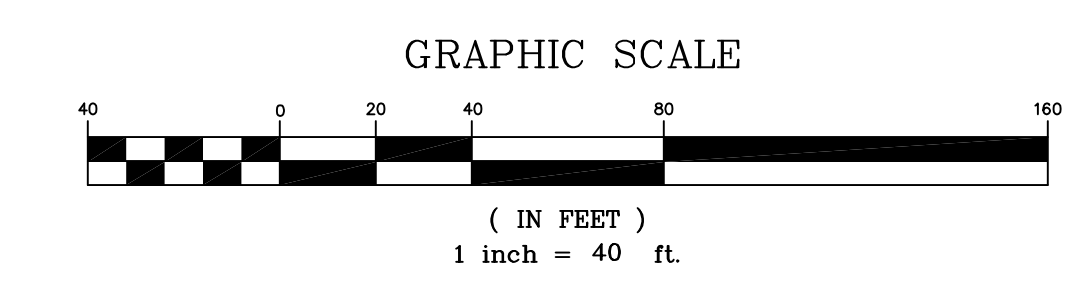
District Regulations for R-15 Zoning are:

- Front yard: 35' from right-of-way of local street
65' from right-of-way of all other streets
- Side yard: 10'
- Rear yard: 25'
- Max. Ground Coverage By Principal Buildings: 25%
- Max. Building Height: 35'
- Min. Floor Area of A Dwelling Unit: 1,500 S.F.

- TRACT 1: 10.30 ACRES (448,735.5 S.F.)
- TRACT 2: 0.92 ACRES (40,224.6 S.F.)
- TRACT 3: 0.39 ACRES (17,114.7 S.F.)
- TRACT 4: 0.53 ACRES (23,250.8 S.F.)

No title information has been furnished to Atlanta Engineering Services, Inc. Easements and other matters that affect the title will be added upon receipt of the title documentation.

LAND SURVEY



© Copyright 2010 - Atlanta Engineering Services, Inc.
These drawings and their reproductions are the property of Atlanta Engineering Services, Inc. and may not be reproduced, published, or used in any way without the written permission of an officer of Atlanta Engineering Services, Inc.

DATE	REVISION

Atlanta Engineering Services, Inc.
185 Thompson St.
Alpharetta, Georgia 30009
Phone: 678-297-2565
Fax: 678-297-2560
www.atlantaeng.com

PREPARED FOR:
W. Sam Stone
Penske Automotive Group
3264 Commerce Avenue
Duluth, GA 30096

LAND SURVEY OF:
Hwy 9 & Upper Hembree Rd
1st District, 2nd Section
Land Lots 597 & 600
Fulton County, Alpharetta, Georgia